



INFORMATION & TECHNICAL PACKET



Bergen Performing Arts Center
30 North Van Brunt Street
Englewood, NJ 07631
201-816-8160

TABLE OF CONTENTS

- Table of Contents 2
- Venue Contact Information3
- Seating Map4
- Technical Information5
- Lighting Plot11
- Lineset Schedule & Hanging Plot13
- Bus & Truck Parking / Loading Dock Locations14
- Patron & Public Parking.....17
- Satellite Map Overview18
- Directions to bergenPAC19
- Dressing Rooms20
- Accommodation Information23
- Hospitality24

VENUE CONTACT INFORMATION

Production/Technical Advance

Director of Production: Joe Feola

jfeola@bergenpac.org

201-615-9574

Stagehand Crew Leadman: Steve Hegel

shegel@bergenpac.org

201-952-3994

Lighting Director: Justin Maria

jmaria@bergenpac.org

862-571-4481

Sound Engineer: Angie Mills

amills@bergenpac.org

443-866-2295

Non-Production/Technical Advance

Director of Programming: Aly Adamopoulos

aadamopoulos@bergenpac.org

201-503-8322

Programming Manager and Executive Coordinator: Jaimie Smith

jsmith@bergenpac.org

201-816-8160 x 1031

Hospitality & Catering: Trish Ramella

tramella@bergenpac.org

201-816-8160 x 1013

Merchandise Sales: Mark Albert

Director of Operations

malbert@bergenpac.org

201-816-8160 x 1022

Marketing & Press

Director of Marketing: Craig Woelpper

cwoelpper@bergenpac.org

201-668-9629

Ticketing

Director of Ticketing: Ethan Ubell

eubell@bergenpac.org

201-816-8160 x 1017

bergenPAC SEATING MAP

BALCONY

18 16 14 12 10 8 6 4 2	V	113 112 111 110 109 108 107 106 105 104 103 102 101	V	1 3 5 7 9 11 13 15 17
18 16 14 12 10 8 6 4 2	U	113 112 111 110 109 108 107 106 105 104 103 102 101	U	1 3 5 7 9 11 13 15 17
18 16 14 12 10 8 6 4 2	T	113 112 111 110 109 108 107 106 105 104 103 102 101	T	1 3 5 7 9 11 13 15 17
18 16 14 12 10 8 6 4 2	S	113 112 111 110 109 108 107 106 105 104 103 102 101	S	1 3 5 7 9 11 13 15 17
18 16 14 12 10 8 6 4 2	R	113 112 111 110 109 108 107 106 105 104 103 102 101	R	1 3 5 7 9 11 13 15 17
18 16 14 12 10 8 6 4 2	Q	113 112 111 110 109 108 107 106 105 104 103 102 101	Q	1 3 5 7 9 11 13 15 17
10 8 6 4 2	P	113 112 111 110 109 108 107 106 105 104 103 102 101	P	1 3 5 7 9
10 8 6 4 2	O	113 112 111 110 109 108 107 106 105 104 103 102 101	O	1 3 5 7 9
10 8 6 4 2	N	113 112 111 110 109 108 107 106 105 104 103 102 101	N	1 3 5 7 9
10 8 6 4 2	M	113 112 111 110 109 108 107 106 105 104 103 102 101	M	1 3 5 7 9
10 8 6 4 2	L	113 112 111 110 109 108 107 106 105 104 103 102 101	L	1 3 5 7 9
10 8 6 4 2	K	113 112 111 110 109 108 107 106 105 104 103 102 101	K	1 3 5 7 9

MEZZANINE

14 12 10 8 6 4 2	J	113 112 111 110 109 108 107 106 105 104 103 102 101	J	1 3 5 7 9 11 13
14 12 10 8 6 4 2	H	113 112 111 110 109 108 107 106 105 104 103 102 101	H	1 3 5 7 9 11 13
14 12 10 8 6 4 2	G	113 112 111 110 109 108 107 106 105 104 103 102 101	G	1 3 5 7 9 11 13
14 12 10 8 6 4 2	F	113 112 111 110 109 108 107 106 105 104 103 102 101	F	1 3 5 7 9 11 13
14 12 10 8 6 4 2	E	113 112 111 110 109 108 107 106 105 104 103 102 101	E	1 3 5 7 9 11 13
14 12 10 8 6 4 2	D	113 112 111 110 109 108 107 106 105 104 103 102 101	D	1 3 5 7 9 11 13
14 12 10 8 6 4 2	C	113 112 111 110 109 108 107 106 105 104 103 102 101	C	1 3 5 7 9 11 13
14 12 10 8 6 4 2	B	113 112 111 110 109 108 107 106 105 104 103 102 101	B	1 3 5 7 9 11 13
14 12 10 8 6 4 2	A	113 112 111 110 109 108 107 106 105 104 103 102 101	A	1 3 5 7 9 11 13

ORCHESTRA

W C 10 8 6 4 2	DD		DD	1 3 5 7 9
10 8 6 4 2	CC		CC	1 3 5 7 9 W C
16 14 12 10 8 6 4 2	BB		BB	1 3 5 7 9 11 13 15
16 14 12 10 8 6 4 2	AA		AA	1 3 5 7 9 11 13 15
A 14 12 10 8 6 4 2	Z		Z	1 3 5 7 9 11 13 A
16 14 12 10 8 6 4 2	Y		Y	1 3 5 7 9 11 13 15
16 14 12 10 8 6 4 2	X		X	1 3 5 7 9 11 13 15
16 14 12 10 8 6 4 2	W		W	1 3 5 7 9 11 13 15
16 14 12 10 8 6 4 2	V		V	1 3 5 7 9 11 13 15
16 14 12 10 8 6 4 2	U		U	1 3 5 7 9 11 13 15
16 14 12 10 8 6 4 2	S		S	1 3 5 7 9 11 13 15
16 14 12 10 8 6 4 2	R		R	1 3 5 7 9 11 13 15
16 14 12 10 8 6 4 2	Q		Q	1 3 5 7 9 11 13 15
A 14 12 10 8 6 4 2	P		P	1 3 5 7 9 11 13 A
16 14 12 10 8 6 4 2	O		O	1 3 5 7 9 11 13 15
16 14 12 10 8 6 4 2	N		N	1 3 5 7 9 11 13 15
16 14 12 10 8 6 4 2	M		M	1 3 5 7 9 11 13 15
16 14 12 10 8 6 4 2	L		L	1 3 5 7 9 11 13 15
16 14 12 10 8 6 4 2	K		K	1 3 5 7 9 11 13 15
16 14 12 10 8 6 4 2	J		J	1 3 5 7 9 11 13 15
16 14 12 10 8 6 4 2	H		H	1 3 5 7 9 11 13 15
16 14 12 10 8 6 4 2	G		G	1 3 5 7 9 11 13 15
16 14 12 10 8 6 4 2	F		F	1 3 5 7 9 11 13 15
A 14 12 10 8 6 4 2	E		E	1 3 5 7 9 11 13 A
16 14 12 10 8 6 4 2	D		D	1 3 5 7 9 11 13 15
16 14 12 10 8 6 4 2	C		C	1 3 5 7 9 11 13 15
16 14 12 10 8 6 4 2	B		B	1 3 5 7 9 11 13 15
16 14 12 10 8 6 4 2	A		A	1 3 5 7 9 11 13 15
12 10 8 6 4 2	CT	110 109 108 107 106 105 104 103 102 101	CT	1 3 5 7 9 11
10 8 6 4 2	BT	110 109 108 107 106 105 104 103 102 101	BT	1 3 5 7 9
8 6 4 2	AT	110 109 108 107 106 105 104 103 102 101	AT	1 3 5 7

STAGE

Fixed Cap:	1,307	Balcony:	324
WC/Comp:	4	Mezzanine:	243
Temp Seats:	60	Orchestra:	740
Total Cap:	1,371	WC/Comp:	4
		Temp Seats:	60

TECHNICAL INFORMATION

Please Note: All work on stage and in theater, including but not limited to, load in/out, set-up, focus (lights), sound, rigging, fly system use, staging, electrical, carpentry, props, wardrobe, etc., must be performed by IATSE Local 632 stagehands.

Stage Dimensions/Information:

- Proscenium Opening width: 33' 4'
- Proscenium Opening – Arch height: 23' 0"
- Proscenium to rear wall: 31' 9"
- Curtain line to rear wall: 29' 8"
- S.R. wing 15'w x 31' 9"d
- S.L. wing 13'w x 28' 9"d
- Thrust/Apron (Installed over orchestra pit): Single: 36'w x 8'd; Double: 36'w x 16'd
- Stage to Mid-Bridge (Stage Left and Stage Right): 19'h
- Grid Height: 49'5"
- Stage to Baton (when gridded): 44'
- Stage to High Steel: 55'

Power:

- USR 400AMP
- MSR 200AMP
- DSR+DSL 100AMP
- Miscellaneous hospital grade 20 AMP Edison outlets located on both stage and orchestra levels

Rigging:

- Single purchase counterweight system with 26 line sets at 800 lbs. total weight each
- All battens are 42' long
- Three (3) Structural Beams (High Steel) over stage. Center stage, stage left (15' from center), and stage right (15' from center) running up-down stage for the use of ½ ton and 1 ton chain motor dead hung points. Motor points can be piped but will not be permitted to exceed 650lbs Static, 500lbs of Dynamic weight. (*House Rigger has final say where motor points will be permitted and their max load.*)
- One (1) 1-ton chain motor off stage right to assist with unstacking/stacking of road cases and other items
- One (1) ½ ton chain motor just upstage of center stage to assist with unstacking/stacking of road cases and set building

Soft Goods:

- Burgundy Main Curtain (guillotine or traveler)
- Two (2) sets of stage legs: 24'h x 10'w
- Two (2) Full Stage Travelers: 24'h x 42'w
- Three (3) Electric Borders: 10'h x 42'w
- Muslin Cyc: 24'h x 42'w (*available upon request*)
- Black or White Scrim: 24'h x 42'w (*available upon request*)
- Off-stage tab curtains for Black Box Theater effect

LIGHTING PACKAGE

Supplied with License – Repertoire Plot. (Call T.D. for updated “Rep.” Plot and guest file for console)

House Lighting Control:

- LX Control Console: grandMA3 Light
- Dimmers: 144 ETC D20E dual 2.4 KW 20A dimmer modules (288 dimmers total)
- grandMA3 Processing Unit XL
- grandMA3 8-port Node

Front of House Lighting Catwalk:

- Cross stage Catwalk at mid-orchestra: 48’w x 6’d; House Floor to Catwalk: 39’; Front of Stage to Catwalk: 39’
- Ten (10) ETC Source Four 750W 10° Ellipsoidals
- Eighteen (18) ETC Source Four 750W 19° Ellipsoidals

House Booms:

- Near Booms (House Right and House Left): 19’ from stage front edge
 - Four (4) ETC Source Four 575W Ellipsoidals
- Mid Booms (House Right and House Left): 38’ from stage front edge
 - Two (2) ETC Source Four 575W Ellipsoidals

Front of House Truss:

- 11’ from front edge of stage; 31’ trim height
- Six (6) Martin Mac Aura PXL
- Five (5) Martin Mac Quantum Profile

Over Stage Electrics:

- Electric 1: Line Set 3 (4’ 0” from Plaster)
 - Six (6) Martin Mac Aura PXL
 - Four (4) Martin Mac Quantum Profile
 - Two (2) Elation CUEPIX Blinder WW4 - 4X 100 Watt COB
 - Eight (8) ETC Source Four 575W Ellipsoidals: Two (2) 26° & Two (2) 36° per side (SL/SR)
- Electric 2: Line Set 13 (11’ 2” from Plaster)
 - Six (6) Martin Mac Aura PXL
 - Four (4) Martin Mac Quantum Profile
 - Eight (8) ETC Source Four 575W Ellipsoidals: Two (2) 26° & Two (2) 36° per side (SL/SR)
- Electric 3: Line Set 21 (18’ 6” from Plaster)
 - Six (6) Martin Mac Aura PXL
 - Four (4) Martin Mac Quantum Profile
 - Eight (8) ETC Source Four 575W Ellipsoidals: Two (2) 26° & Two (2) 36° per side (SL/SR)
- Electric 4: Line Set 24 (23’ 0” from Plaster)
 - Four (4) Martin Mac Aura PXL CYC Lights

Stage Lighting:

- Stage Booms:
 - Six (6) Upright 10’ Tall Stage Booms with 50lb base
 - Three (3) ETC Source Four 575W Ellipsoidals (Top 26°, Mid 36°, Bottom 36°) per boom
 - *Stage Booms are stored disassembled. Please notify LD and Director of Production if you intend to use booms for performance prior to show day.*
- Ground Package:
 - Four (4) Martin Mac Quantum Profile
 - Two (2) Martin Aura PXL

Additional/Available Lights:

- Sixteen (16) ACL PAR 64 (can be hung on Line Set 19 with advanced notice)
- Fifteen (15) ETC Source Four 575W Ellipsoidals
- Two (2) ETC Source Four 750W Ellipsoidals
 - Assorted Barrels for ETC Source Four: 19°-7; 26°-4; 36°-11; 50°-5
- Ten (10) Generico XF710 Led Uplights

Spotlights:

- Three (3) 2500 K Aramis Robert Juliat Spotlights
- One (1) 2K Strong Super Trooper

Additional Notes:

- House Gel: The house can supply standard Blue, Red, Amber and Lav gel for ETC Source Four and PAR 64 lights. Licensee will be responsible to advance any specific gel requirements for FOH stage wash or side booms utilizing gel frames.
- All Electrics (FOH Catwalk, House Booms, and Over Stage Electrics) are equipped with:
 - 5 pin DMX outlet boxes to accommodate automated color media equipment boxes for DMX controlled equipment.
- There are Fourteen (14) floor pockets (stage pin); each with 3 circuits (2 outlets per circuit).

VIDEO PACKAGE:

- Christie 14K-M Series Projector with M-Series 0.67 HD 3-Chip DLP Lens
 - Preferred input: HDMI or SDI
- 28' x 16' Roll Down Draper Projector Screen
 - Located Upstage of Full Stage Black Traveler and White CYC
- Two (2) 85" TV Ad/Video Playback/IMag Screens located in the house outside of the Proscenium
- Two (2) SDI runs from FOH to Stage Right Video Work Box for Projector and House Screen video feeds
 - Alternate playback positions available if needed

Camera Equipment:

- Sony NXCAM AVCHD Mpeg2 SD Exmor 3CMOS
 - Manfrotto MVH 502A Fluid Head on a Manfrotto 546GB Pro Video Tripod w/ Ground Level Spreader
 - with Manfrotto RC Clamp LACN Zoom/Focus Remote

HAZE:

- One (1) Chauvet Professional AmHaze Stadium (Water Based)

BACKLINE:

- Yamaha Maple Custom Recording Drum Kit:
 - 14" x 7" Yamaha Rock Tour Snare
 - 18" Yamaha Maple Custom Kick
 - 22" x 15" Yamaha Maple Custom Kick
 - 14" Yamaha Maple Custom Tom
 - 12" Yamaha Maple Custom Tom
 - 10" Yamaha Maple Custom Tom
 - 16 x 14" Yamaha Maple Custom Tom
 - Cymbals:
 - 22" Zildjian Ride
 - 20" Zildjian Ride
 - 18" Zildjian Crash
 - 15" Zildjian Crash
 - 14" Zildjian Hole in Crash
 - 14" Hi Hat Set
 - Stands and Pedals:
 - Yamaha Snare Stand
 - Pearl Kick Pedal
 - Four (4) Yamaha Cymbal Stands
 - Yamaha Hi Hat Stand
 - Rack Tom Stand
 - Yamaha Drum Throne
- One (1) SWR 800 Bass Head with 410
- One (1) Roland JC Q120 Amplifier
- One (1) Steinway 9ft. Concert Grand Piano, Model D (*Tuning available upon request*)
- One (1) Matador LP Bongos
- Five (5) Hercules Guitar Stands
- One (1) Lasco Stage Fan

ADDITIONAL EQUIPMENT:

- Assorted Ladders
- One (1) ClearCom MS-702 wired com & belt packs
- Sixty (60) Music Stands
- Forty (40) Music Stand Lights (wired)
- Forty (40) Orchestra Chairs
- Genie AWP-25S Personnelle Lift
- Orchestra Risers
 - Eight (8) 8'w x 4'd; Available Heights: 8", 12" and 24"
- Marley Dance Floor
- Twelve (12) Black Wooden Stage Stools
- Pipe and Drape
 - Eight (8) Bases; Eight (8) Adjustable Uprights; Eight (8) Cross Braces (9' up to 16'); Sixteen (16) 8'h x 9'w Black Curtains

SOUND PACKAGE:

PA System:

- Twenty-six (26) L'acoustics Kara 2 way modular WST enclosure(13 House Left, 13 House Right Hang)
- Eight (8) L'acoustics SB18 subwoofer 1x18”(4 House Left, 4 House Right Hang behind Kara)
- Four (4) L'acoustics 8XTi 2-way passive coaxial 8”LF and 1.5”HF (Front Fill)
- Four (4) L'acoustics LA8 Amplified Controller 1800Watts@4ohms
- Two (2) L'acoustics LA4X Amplified Controller w/PFC 4 x 1000w/4 ohms, Ethernet network)
- Four (4) L'acoustics 8XTi 2-way passive coaxial 8”LF + 1.5”HF(Under Balcony)

Sound System is configured in 5 zones. Left, Right, Sub, Front Fill, and Underbalcony. Audio Power – 200 AMP, 3 phase, 5 wire

Audio Control:

- One (1) Whirlwind 58 Channel ISO Transformer/3way Split Snake (1 Main, 2 Aux)
- Two (2) Yamaha CL-5 Digital Console (48 mic inputs)
- One (1) Denon 650 CD Player
- Two (2) Yamaha Rio 3224-D
- Two (2) Yamaha Rio 1608-D
- One (1) Clearcom MS-702 wired com & beltacks
- One (1) Clearcom Freespeak II w/ five (5) beltacks

Stage Monitors:

- Fifteen (15) L'acoustics 112P Powered Coaxial 12” and HF 1.4” 1000W wedges
- One (1) QSC Drum Sub
- Two (2) QSC KW153 1kW 75° Active Loudspeakers (Side Fills)
- Two (2) QSC KW181 1kW Active Subwoofers (Side Fills)

Microphones:

- Six (6) Shure Axient Wireless Handhelds
- Five (5) Shure UR Handheld Transmitters
- Four (4) UR Bodypack Transmitters
- Six (6) Shure Axient Beltacks
- Three (3) Shure Beta 98
- One (1) Shure Beta SM91
- Three (3) Shure Beta SM52 Kick Drum Microphones
- Two (2) Shure Beta SM58
- Nine (9) Shure SM58 Vocal Microphone
- Five (5) Shure Beta SM57
- Five (5) Shure SM57
- Five (5) Shure SM81 Condenser Microphones
- Three (3) Sennheiser e906
- Eight (8) Sennheiser e604
- Four (4) Sennheiser MD 421-II Dynamic Microphone
- One (1) AKG D112
- AMT Piano Miking System

Direct Boxes:

- Four (4) Radial ProD2 2-channel Passive Instrument Direct Box
- Two (2) Radial ProDI 1-channel Passive Instrument Direct Box
- Three (3) Whirlwind pcDI 2-channel Passive A/V Direct Box
- Three (3) BSS AR116 Direct Boxes (Active)
- Nine (9) Countryman DT-85 Direct Boxes (Active)

Microphone Stands:

- Nine (9) Atlas Round Base Straight Stands
- One (1) K&M Round Base Straight Stand with Clutch
- K&M Boom Stands:
 - Choir - Four (4)
 - Tall - Thirteen (13)
 - Short - Nine (9)
 - Mini - Five (5)

TRUCK ACCESS:

- Two (2) overhead roll-up dock doors; 10'h x 8'w (located stage right)
- Two (2) 3'w x 6'l Loading Ramps
- One (1) 5'w x 6'l Loading Ramp
- One (1) 3'w x 15'l Loading Ramp

BERGEN PERFORMING ARTS CENTER

Lineset Schedule & Hanging Plot

Single Purchase Arbor System & Repertory Linesets

Arbor Capacity is 700lbs Maximum. This includes existing arbor and counter balance weights.

Lineset #	JS from Plaster	Description of Lineset	Qty Bricks	Show Use Description	Weight (lbs)	Bricks +/-
1	1' 10"	Main Curtain	21 1/2			
2	2' 8"	Border	8			
3	4' 0"	Electric 1	25			
4	4' 9"	Open	5	N/A with House Projector		
5	5' 11"	House Projector	10			
6	6' 6"	Open	5	N/A with House Projector		
7	7' 2"	Legs	6 1/2			
8	7' 7"	Open	5			
9	8' 2"	Open	5			
10	9' 5"	Open	4			
11	10' 0"	Open	5			
12	10' 8"	Border	8			
13	11' 2"	Electric 2	24			
14	11' 8"	Open	5			
15	12' 2"	Open	5			
16	12' 10"	Open	5			
17	13' 8"	Mid Stage Traveler	18 1/2			
18	15' 8"	Open	5			
19	16' 0"	Open	5			
20	17' 0"	Border	8			
21	18' 6"	Electric 3	24			
22	20' 0"	Legs	6 1/2			
23	21' 6"	Open	5			
24	23' 0"	Electric 4	15			
25	24' 6"	Upstage Traveler	15 1/2			
26	27' 2"	CYC Drop	7			
	29' 6"	Stage Back Wall				

Technical Specs

Proscenium Opening: 33' 4"
 Arch Height: 23' 0"
 Proscenium to Rear Wall: 31' 9"
 Curtain Line to Rear Wall: 29' 8"
 SR Wing Space: 15'w x 31' 9"d
 SL Wing Space: 13'w x 28' 9"d

Stage to High Steel: 55' 0"
 Grid Height: 49' 5"
 Stage to Baton: 44' 0"
 Stage to Mid Bridge: 19' 0"

Soft Goods

Main Curtain: 24'h x 42'w
 Travelers: 24'h x 42'w
 Legs: 24'h x 10'w
 Borders: 10'h x 42'w
 ALL Batons: 42' Long

Bricks

Full: 36lbs
 Sm. Full: 25lbs
 Half: 15lbs
 Sm. Half: 12th s

LX Details

Quantum Profile: 52lbs
 Aura PXL: 35lbs
 ETC Source Four: 15lbs
 Par 64: 10lbs
 CUEPIX Blinder: 21lbs
 LX1/2/3/4 Raceways

Pipe Weight: 180lbs
 Raceway Weight: 252lbs

Rigging Three (3) Structural Beams over Stage. Center Stage, Stage Left, Stage Right (15' from House Rigger has final say where motor points will be permitted and their max load.

BUS & TRUCK PARKING / LOADING DOCK

West Loading Dock – located at 23 Nathaniel Place, Englewood in the Palisades Court shopping center.



South Loading Dock – located by using 2 Nathaniel Place in GPS. Once on Nathaniel Place, take first right into the parking lot. Theatre is on the left.



BUS AND TRAILER PARKING



**All tour parking, including but not limited to truck, bus, van, trailer, and passenger vehicles to be discussed during the technical advance..

NATHANIEL PLACE LOADING DOCK VIEW



SATELLITE MAP OVERVIEW



DIRECTIONS TO bergenPAC

FROM ROUTE 4 EAST/WEST

Exit right at Englewood/Grand Avenue

Go north on Grand Avenue to Palisade Avenue (about 1 mile).

Turn left and go two blocks to North Van Brunt Street (immediately after railroad tracks). Turn right. bergenPAC is in the middle of the block on the left

FROM ROUTE 17 NORTH/SOUTH

Route 17 North or South to Route 4 East.

Follow directions “From Route 4 East/West” above.

FROM GEORGE WASHINGTON BRIDGE

Take Route 4 West exit

Follow directions “From Route 4 East/West” above.

FROM NJ TURNPIKE

95 North (Local) toward GWB to Exit 71 (Broad Avenue). Turn right onto Broad Avenue

Stay on Broad Avenue

Broad Avenue becomes Dana Place.

At the end of Dana Place, turn left at traffic light onto Palisade Avenue. Make right after the railroad tracks onto Van Brunt Street. bergenPAC is on the left.

FROM ROUTE 80

Take Route 80 East (local lane). When you reach Teaneck, Route 80 merges into Route 95

Follow directions “From NJ Turnpike” above.

FROM GARDEN STATE PARKWAY

Garden State North take Exit 161 to Route 4 East. Follow directions “From Route 4 East/West” above.

Garden State South take Exit 163 to NJ 17 South to Route 4 East. Follow directions for “From Route 4 East.”

BUSES FROM NEW YORK CITY

From Port Authority at 42nd St. to Palisade Ave. & N. Van Brunt St. Englewood. Take bus #166 NJ Transit from Port Authority or bus #20 Coach USA from Port Authority. *Call N.J. Transit 1-973-275-5555*

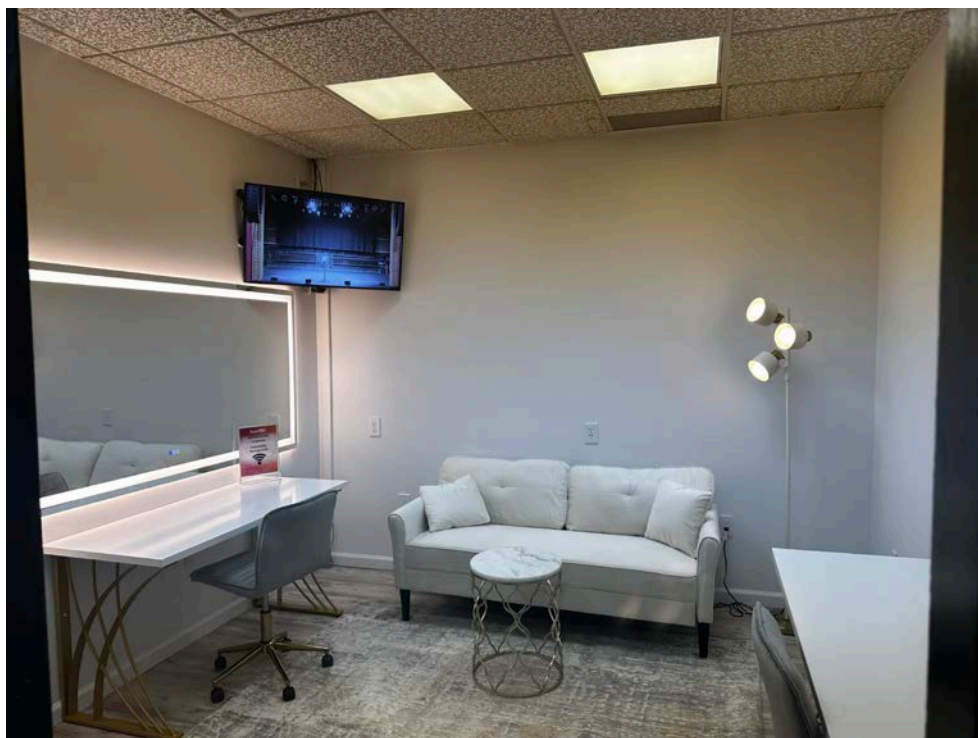
DRESSING ROOMS

*The following 4 rooms are located on the 2nd floor and are accessible by elevator.
If additional space is needed, please discuss during the advance.*

Star 1 – Includes private restroom with shower



Star 2 – Includes private restroom with shower



Chorus 3 – Restrooms including shower, washer, & dryer located directly across



Chorus 4 – Restrooms including shower, washer, & dryer located directly across



Green Room Hallway – Access way between Star and Chorus Dressing rooms with hospitality set up area



3rd Floor Catering Area – Single restrooms located on this level as well



ACCOMMODATION INFORMATION

Hotels

Crowne Plaza Englewood
401 South Van Brunt Street
Englewood, NJ 07631
201-871-2020

Clinton Inn Hotel & Event Center
145 Dean Drive
Tenafly, NJ 07670
201-871-3200
www.clinton-inn.com

Teaneck Marriott at Glenpointe
100 Frank W Burr Boulevard
Teaneck, NJ 07666-6702
201-836-0600

Hampton Inn and Suites Teaneck/Glenpointe
1 Glenwood Avenue, Suite B
Teaneck, NJ 07666-6497
855-605-0317

Transportation

BBZ Limo
115 Woodbine Street
Bergenfield, NJ 07621
800-815-5466
<http://www.bbzlimo.com>

Enterprise
280 South Dean Street
Englewood, NJ 07631
201-567-8555
<https://www.enterprise.com/en/car-rental-locations/us/new-jersey/englewood-2441.html>

HOSPITALITY

Eateries

- **Preferred Restaurants**
 - Antioch Cuisine 35 W Palisade Ave 201-408-2550 (Mediterranean)
 - Blue Akai 23 E. Palisades Ave 201-541-0600 (Mexican Japanese Sushi Lounge)
 - CZEN 36 N. Van Brunt St. 201-431-9199 (Modern Caribbean Asian Fusion)
 - The Grand Cubano 11 Grand Ave 201-731-3132 (Cuban Cuisine)
 - Lefkes Estiatorio 495 Sylvan Ave. 201-408-4444 (Greek Cuisine)
 - Mexcal 24 N. Van Brunt 201-414-2371 (Tacos Tequila Lounge)
 - Sofia 36 Engle St. 201-541-8530 (Farm to Table Italian Cocktail Cigar Lounge)
- **Italian**
 - Cassie's 18 S. Dean St 201-541-6760
 - Bartolomeo 105 N. Dean St. 201-567-7002
 - Red, White & Pasta 21 E. Palisade Ave. 201-731-3223
 - Vittorio's Pizzeria 59 Nathaniel Place 201-503-0177
 - Crispy Crust -Pizza- 44 W. Palisade Ave 201-567-9502
- **Japanese**
 - Daruma 45 N Dean St 201-567-9600
- **Hispanic**
 - Chipotle 10 Nathaniel Place 201-608-0287
 - Taqueria Los Gueros 46 W. Palisade Ave. 201-408-5924
 - Pintxo Y Tapas 47 N. Dean St. 201-569-9999
 - Colombia Kaliente 30 E. Palisade Ave. 201-569-2510
- **Mediterranean**
 - Rose's of Englewood 126 Engle St 201-541-0020
 - Hummus Elite 39 E. Palisade Ave. 201-569-5600
- **Asian**
 - Best Dumplings 16 Humphrey St. 201-568-9337
- **Fast Food**
 - Chick Fil A 2 Nathaniel Place 201-227-2050
 - Firehouse Subs 41 W. Palisade Ave. 201-731-3148
 - Manhattan Bagel 14 W. Palisade Ave. 201-816-0008
 - McDonalds 43 W. Palisade Ave. 201-894-0048
 - Town Hall Deli 4 W. Palisade Ave. 201-816-3547
 - Evergreen Deli 260 Grand Ave. 201-541-1234
- **Bakery, Coffee Shops & More**
 - Bianco Nero Gelato 18 E Palisade Ave 201-731-3088
 - Dulce De Leche Bakery 55 W. Palisade Ave. 201-869-6999
 - Dunkin 39 W. Palisade Ave. 201-569-3465
 - IHOP 141 N Dean St. 201-568-8088
 - Jackson Hole Diner 362 Grand Ave. 201-871-7444
 - Patisserie Florentine 10 S. Dean St. 201-408-4890
 - Poke Crew 1 E. Palisade Ave 201-431-9500
 - Salad House 33 E Palisade Ave 201-408-4015
 - Starbucks 17 E. Palisade Ave 201-871-3212
 - Vegan Pastry Lab 18 E. Forest Ave 201-431-9152
 - Coach House Diner 55 Rt 4 Hackensack 201-488-4999 Open 24/7

Health & Wellness

- Englewood Health (hospital) 350 Engle Street 201-894-3000
- Englewood Health Urgent Care 35 Nathaniel Place 201-222-1234
- CVS Pharmacy 10 West Palisade Avenue 201-541-5548
- Alywards II Health 14 North Van Brunt 201-567-1489

Miscellaneous

- Guitar Center Route 240 NJ-17 Suite 3, Paramus 201-576-9869
- O Di Bella Music Inc 456 S Washington Ave, Bergenfield 201-385-5800